



**BALMAIN**  
**PARIS**

**HAIR COUTURE**



**HAIR COUTURE COLLECTION**

# BALMAIN PARIS

The Balmain Paris fashion house, founded in 1945 by Pierre Balmain, was well known for its feminine, elegant style. Nowadays Balmain Paris is renowned for its edgy and sexy looks. In 2011 Olivier Rousteing stepped on board where his collection contains the Balmain-signature look with a highly appreciated twist.

## **THE ONLY PARIS FASHION HOUSE WITH BACKSTAGE HERITAGE IN HAIR**

As part of the Balmain Paris fashion house, Balmain Hair Couture has over 45 years of heritage in combining hair essentials with the latest catwalk trends. The collections are inspired by backstage secrets and mirror all a woman needs to create the ultimate catwalk inspired look. Over these years, Balmain Hair Couture established its legitimacy in the field of hair luxury.



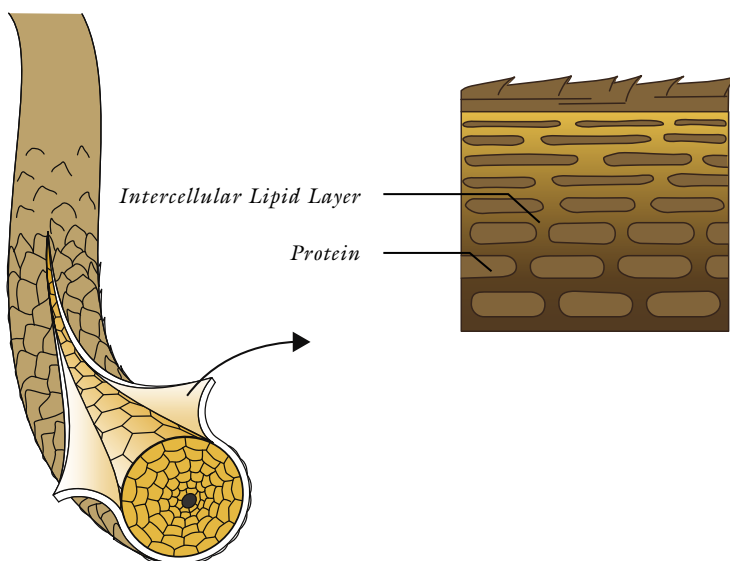
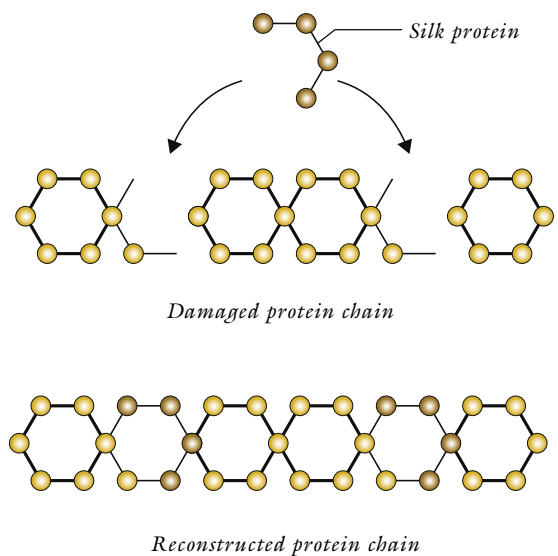
# AT THE HEART OF HAIR COUTURE

## THE POWER OF SILK

Silk and Cashmere contain 17-18 of the 19 amino acids in hair which creates a strong affinity which:

- Reconstructs damaged areas to create a smooth cuticle
- Reinforces hair's strength to prevent daily damage from styling tools.
- Revitalizes and rejuvenates hair for a soft, supple, shiny result at the heart of hair couture.

Silk and Cashmere protein are active ingredients which stimulates optimal moisture retention within hair cells. When combined with powerful antioxidants, the perfect synergy of ultimate hydration and protection is created. Intensely regenerated and deeply revitalized, hair shines with captivating radiance. Sublime beauty and serenity radiate from within.



## ARGAN BOOST

A natural anti-ageing ingredient, creating lustrous-looking shine. Repairs and protects damaged, dry and weak hair from environmental extremes.

- Argan works as a protective barrier and locks-in moisture.
- Argan settles itself in-between and on-top of the protein. It prevents dehydration.

Silk, Cashmere protein and Argan are key ingredients to deliver the best product benefits.





## SIGNATURE FRAGRANCE

A journey to freedom, steals you away to the perfect summer day. The scent unfolds on your hair with a fascinating blend of star anise, tarragon, pinewood, peach blossom, raspberry, gardenia, orange blossom, cloves, jasmine, rose, ylang-ylang, apricot, lilac, amber, vanilla, sandalwood, cedar wood, white musk & balsamic.

**TOP NOTE:** *star anise, tarragon, pinewood, peach blossom, raspberry, gardenia*

**MIDDLE NOTE:** *orange blossom, cloves, jasmine, rose, ylang-ylang, apricot, lilac*

**BASE NOTE:** *amber, vanilla, sandalwood, cedar wood, white musk, balsamic*





## LUXURY CARE FOR HAIR COUTURE

A unique product line of the bare essentials for manageable soft, shiny, healthy looking hair. Presented in clear and clean no nonsense packaging. the ingredients, silk protein and argan oil, are key to deliver the best product benefits.

- Light weight, versatile care
- Rejuvenating instant boost
- High performance volume

## VOLUME CARE LINE

A luxurious and lightweight daily line designed to add fabulous volume to thin and fine hair. For shiny and perfectly styled hair.

The formula of the Volume Care line is especially designed to create ultra voluminous hair. The formula leaves the hair cuticles open, which gives extra volume to the hair. By using the complete Volume Care line the hair will be in optimal condition, strong and perfectly soft. The Leave-In Conditioning Spray enhances detangling and combability, protects the hair against external damages and gives the hair a healthy, natural gloss.



300 ml/10.14 fl. oz, also available in 1000 ml/33.81 fl. oz



300 ml/10.14 fl. oz, also available in 1000 ml/33.81 fl. oz



200 ml/6.76 fl. oz, also available as travel size 50 ml/1.69 fl. oz



300 ml/10.14 fl. oz, also available as travel size 75 ml/2.54 fl. oz

### VOLUME SHAMPOO

VOLUME ●●●●●  
MOISTURE ●●○○○

*Lightweight volume shampoo, creates full bodied, shiny hair with added volume.*

### VOLUME CONDITIONER

VOLUME ●●●●○  
MOISTURE ●●●○○

*Lightweight volume conditioner. A Nourishing, caring conditioner, with volume boost to create voluminous, full bodied hair.*

### LEAVE-IN CONDITIONING SPRAY

CARE ●●●●○  
MOISTURE ●●●○○

*Conditions hair and scalp, smoothes hair cuticle, contains UV protection*

### DRY SHAMPOO

STYLE LONGEVITY ●●●●○  
MOISTURE ●○○○○

*This instantly refreshing dry cleaner spray absorbs oil and boosts your style without washing. Perfect to create matt textured and full bodied voluminous hair.*

## MOISTURIZING CARE LINE

A highly nourishing collection for natural or coloured hair, enriched with pure organic argan oil. Revitalizes, protects and gives natural shine and elasticity.

The Moisturizing Care line is enriched with the finest ingredients to reach optimal results. The uv-shields protect the hair against uv radiation and enhance colours retention. Provides long lasting colours to colour-treated hair and gives the hair a brilliant shine. Provitamin B5 works by improving the effects of moisture retention, hair elasticity and flexibility. It calms irritated and sensitive scalps, softens the hair and creates lots of shine. This ingredient gives the hair an extra boost of vitamin B which thickens the hair and stimulates hair growth.



300 ml/10.14 fl. oz, also available in 1000 ml/33.81 fl. oz



300 ml/10.14 fl. oz, also available in 1000 ml/33.81 fl. oz



200 ml/6.78 fl. oz

### MOISTURIZING SHAMPOO

COLOUR LONGEVITY ●●●○○  
MOISTURE ●●●●●

*Deeply nourishing shampoo enriched with pure organic Argan oil. Suitable for treated and/or coloured hair. Creates strong, shiny and manageable hair.*

### MOISTURIZING CONDITIONER

COLOUR LONGEVITY ●●●●○  
MOISTURE ●●●●●

*Revitalizing and nourishing conditioner, enriched with pure organic Argan oil. Repairs, strengthens and protects the hair, contains deep colour, thermal and UV-protection filters.*

### MOISTURIZING REPAIR MASK

MOISTURE ●●●●○  
RECONSTRUCT ●●●○○

*Intensive treatment hair repair mask, enriched with pure organic Argan oil. Restores damaged, over processed hair, leaving hair soft, shiny and manageable.*



## REVITALIZING CARE LINE

An intense replenishing treatment for dry, damaged and over processed hair. Strengthens, rebuilds and repairs the hair from the inside. For deeply nourished lustrous locks.

The Revitalizing Care line is enriched with the best quality ingredients to revitalize the hair from the inside. The revitalizing formula includes a fine selection of vitamins E, F and P. Vitamine E gives a boost to the hair and revitalizes the hair from within. Vitamine F keeps the scalp healthy, whereas vitamine p repairs dry and damaged hair, strengthens the hair fibers and nourishes the hair from the root. Due to the cashmere and silk ingredients in the luxurious Revitalizing Line, the hair will feel smooth and silky soft. The ultimate ingredients for shiny, lustrous locks.



300 ml/10.14 fl. oz, also available in 1000 ml/33.81 fl. oz



300 ml/10.14 fl. oz, also available in 1000 ml/33.81 fl. oz



200 ml/6.78 fl. oz

### REVITALIZING SHAMPOO

MOISTURE ●●●○○  
RECONSTRUCT ●●●●●

*Gently cleanses while providing optimal nutrition to dry, damaged hair. Moisturizes, nourishes and rebuilds the strength of the hair from the inside.*

### REVITALIZING CONDITIONER

MOISTURE ●●●●○  
RECONSTRUCT ●●●●○

*A lightweight, incredibly nourishing conditioner for dry, damaged hair. The revitalizing formula restores the hair's vitality without adding weight.*

### REVITALIZING MASK

MOISTURE ●●●●●  
RECONSTRUCT ●●●●●

*An intense revitalizing hair spa for dry, damaged hair. Replenishes, moisturizes and reinforces the hair from the inside.*

## COULEURS COUTURE CARE COLLECTION

The unique Couleurs Couture colour care collection is specially designed for colour-treated, damaged and over-processed hair. The Couleurs Couture Shampoo and Conditioner promotes colour longevity, repairs, strengthens and revives the hair deeply from within.

The carefully selected key ingredients Argan Elixir, Silk-, and Cashmere protein are enhanced with Quinoa Seed- and Cocos Oil. This unique and rich combination of fine ingredients will deeply strengthen and moisturize the hair. The UV-shields protect the hair against free radicals to enhance colour longevity.



### COULEURS COUTURE SHAMPOO

COLOUR LONGEVITY ● ● ● ● ●  
RECONSTRUCT ● ● ● ● ○

*Restoring and gently cleansing shampoo for coloured, damaged and over-processed hair. Enriched with a unique blend of Argan Elixir, Silk and Cashmere protein to deeply nourish and strengthen the hair. UV-shields enhance colour longevity.*



### COULEURS COUTURE CONDITIONER

COLOUR LONGEVITY ● ● ● ● ●  
RECONSTRUCT ● ● ● ● ○

*Intense moisturizing conditioner for colour-treated, damaged and over-processed hair. Nourishes, detangles and strengthens the hair deeply from within. Enriched with a unique blend of Argan Elixir, Silk and Cashmere protein for soft and shiny hair.*

## ILLUMINATING CARE LINE

Blonde, silver and highlighted hair gets yellow and brassy very easily, especially during the summer days when hair is exposed to sun, sea and chlorine. Banish brassy tones in between salon appointments and maintain a vibrant blonde, silver or highlighted hair colour.

The Illuminating Care line is enriched with violet pigments to brighten the hair colour. The illuminating formula includes Polyquaternium-44 which conditions, reduces frizz and enhances detangling and combability. Softens the hair and creates lots of shine.

Excessive use is not recommended due to the permanent effect on the hair.



### ILLUMINATING SHAMPOO SILVER PEARL

COLOUR LONGEVITY ●●●●○  
MOISTURE ●●○○○

*Brightening shampoo for blonde and silver hair. Pure violet pigments correct unwanted brassiness and yellow tones. Creates a luminous shine while leaving a vibrant crystal grey colour.*



### ILLUMINATING SHAMPOO WHITE PEARL

COLOUR LONGEVITY ●●●●○  
MOISTURE ●●○○○

*Illuminating cleansing shampoo for blonde or highlighted hair. Brightens the hair colour without making the hair grey. For shinier hair with the glow of a white pearl.*



### ASH TONER

COLOUR LONGEVITY ●●●●○  
MOISTURE ●●○○○

*A brightening silver spray that neutralizes yellow or warm tones into natural, dyed or highlighted hair.*

### OVERNIGHT REPAIR SERUM

A luxurious rich hair serum for an intensive overnight repair treatment. The concentrated formula repairs and strengthens the hair. Enriched with nine natural oils and extracts the serum reduces visible signs of damaged hair and protect the hair against split ends.

### HAIR PERFUME

A refined and delicate hair mist that represents the Balmain Hair Couture fragrance signature in its purest form. Infused with organic Argan Elixir and Silk Protein to nourish, repair and protect the hair whilst providing a fresh, harmonious scent that unfolds over time. With notes of star anise, tarragon, pinewood, peach blossom, raspberry, gardenia, orange blossom, cloves, jasmine, rose, ylang-ylang, apricot, lilac amber, vanilla, sandalwood, cedar wood, balsamic and white musk.



#### OVERNIGHT REPAIR SERUM

MOISTURE ●●●●○  
RECONSTRUCT ●●●●○

*Enriched with nine natural oils and extracts the serum reduces visible signs of damaged hair and protect the hair against split ends.*



#### HAIR PERFUME

HOLD ●●●●○  
SHINE ●●●●○

*A refined and delicate hair mist that represents the signature Balmain Hair Couture fragrance in its purest form.*



## 5 WEEK ENRICHING HAIR TREATMENT

The haircare treatment for regeneration and revitalization within 5 weeks. This soft, lightweight, versatile lotion helps to revitalize and restore hair to its most youthful, radiant appearance. The two active ingredients in the formula: Silk Protein and Succinic Acid seal the hair cuticles, give body and elasticity while reconstructing the hair fiber for healthy hair with a luminous shine.



## 5 WEEK ENRICHING HAIR TREATMENT

RECONSTRUCT ● ● ● ● ●  
MOISTURE ● ● ● ● ●

*The haircare treatment for regeneration and revitalization within 5 weeks. This soft, lightweight, versatile lotion helps to revitalize and restore hair to its most youthful, radiant appearance.*



## STYLING FOR HAIR COUTURE

A unique product line of the bare essentials to suit every occasion, creating high fashion finished styling every time. Presented in clear and clean no nonsense packaging. The ingredients as silk protein and argan oil are key to deliver the best product benefits.

- Light weight, versatile styling
- Rejuvenating instant boost
- High performance volume



200 ml/6.76 fl. oz, also available as travel size 50 ml/ 1.69 fl. oz

#### SILK PERFUME

MOISTURE ●●●○○  
SHINE ●●●●●

*Backstage secret! Specially formulated to provide a lightweight silk finish, infused with pure Argan oil.*



200 ml/6.76 fl. oz, also available as travel size 50 ml/ 1.69 fl. oz

#### TEXTURIZING SALT SPRAY

HOLD ●●●●○  
SHINE ○●○○○

*Bodifying sea salt adds definition, texture and body.*



200 ml/6.76 fl. oz

#### THERMAL PROTECTION SPRAY

COLOUR LONGEVITY ●●●●○  
MOISTURE ●●●○○

*Creates a lightweight thermal shield that protects the hair up to 220°C/428°F.*



200 ml/6.76 fl. oz

#### SUN PROTECTION SPRAY

COLOUR LONGEVITY ●●●●○  
MOISTURE ●●●○○

*The formula enriched with protective UV filters helps to nourish and condition sun, sea or chlorine exposed hair.*



100 ml/3.38 fl. oz

#### STYLING GEL STRONG

HOLD ●●●○○  
SHINE ●●●○○

*Lightweight long-lasting hold for wet or dry catwalk inspired looks*



100 ml/3.38 fl. oz

#### MATT PASTE

HOLD ●●●●○  
SHINE ●●○○○

*Smooth textured paste for a firm yet natural looking hold and a dry matt finish*



100 ml/3.38 fl. oz

#### MATT CLAY STRONG

HOLD ●●●●○  
SHINE ●●○○○

*Provides a long lasting hold for a matt defined look with maximum texture.*



100 ml/3.38 fl. oz

#### SHINE WAX

HOLD ●●○○○  
SHINE ●●●●●

*Reworkable wax adds definition and shine for a strong hold. Perfect for a sleek finished look.*

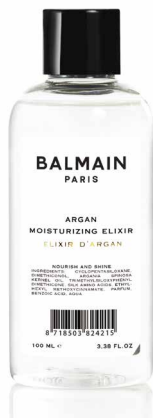


11 g / 5.07 fl. oz.

### STYLING POWDER

**HOLD** ● ● ● ● ●  
**SHINE** ○ ○ ○ ○ ○

*A hair powder that provides texture and volume at the root for long-lasting hairstyles with a flexible hold.*



100 ml / 3.38 fl. oz. also available as travel size 20 ml / 0.68 fl. oz.

### ARGAN MOISTURIZING ELIXIR

**MOISTURE** ● ● ● ● ●  
**SHINE** ● ● ● ● ●

*Rejuvenating pure organic serum, gives an instant boost creating a smooth and healthy look.*



150 ml / 5.07 fl. oz.

### PRE STYLING CREAM

**MOISTURE** ● ● ● ● ●  
**HOLD** ● ● ● ● ●

*The ultimate base for any hairstyle. Nourishes, prepares and protects the hair. Controls curls and reduces frizz.*



150 ml / 5.07 fl. oz.

### CURL CREAM

**MOISTURE** ● ● ● ● ●  
**SHINE** ● ● ● ● ●

*The lightweight formula activates, hydrates and defines curls. Helps to fight frizz without flattening texture.*



200 ml / 6.76 fl. oz. also available as travel size 75 ml / 2.54 fl. oz.

### TEXTURIZING VOLUME SPRAY

**HOLD** ● ● ● ● ●  
**SHINE** ● ○ ○ ○ ○

*Thickens the hair and provides an instant root lift for ultimate volume.*



300 ml / 10.14 fl. oz. also available as travel size 75 ml / 2.54 fl. oz.

### SESSION SPRAY STRONG

**HOLD** ● ● ● ● ●  
**SHINE** ● ○ ○ ○ ○

*High-performance styling spray for controlling, fixating and finishing.*



300 ml / 10.14 fl. oz.

### SESSION SPRAY MEDIUM

**HOLD** ● ● ● ● ●  
**SHINE** ● ● ● ● ●

*Shaping for moveable and workable hold.*



300 ml / 10.14 fl. oz.

### VOLUME MOUSSE STRONG

**MOISTURE** ● ● ● ● ●  
**HOLD** ● ● ● ● ●

*Versatile styling without compromising on hold.*





# LUXURY CARE AND STYLING GIFTSETS

A diversity in giftsets specially designed for all hair-types and to create the desired hair style.

The Spring-Summer Limited Editions are available in special seasonal packaging that refer to the colour-blocking trend of the season. Inspired by the Balmain Resort Collection 2021, steeped in Nineties references such as “Beverly Hills, 90210,” “The Fresh Prince of Bel-Air” and Julia Roberts in “Pretty Woman.”



*Limited Edition  
Backstage Case*



*Limited Edition  
Cosmetic Bags*



*Limited Edition  
Signature Foundation*



*Limited Edition  
Summer Breeze Set*



*Styling Giftset 1*

*Styling Giftset 2*



*Moisturizing Care Set*



*Revitalizing Care Set*



*Volume Care Set*



*Care Cosmetic Bag*



*Styling Cosmetic Bag*





# PROFESSIONAL BRUSH COLLECTION

*High quality, professional brushes for styling and finishing*

The Professional Round Brush collection is designed with ceramic coating that emits negative ions, closes hair cuticles, locks in moisture and reduces frizz and flyaway hair. The ceramic coating ensures fast and even heat distribution, enhancing drying time. With ergonomic, seamless handle and large round holes to maximize airflow.



**ROUND BRUSH Ø 25 MM**

*For use on short hair to create a root lift or small waves.*



**ROUND BRUSH Ø 33 MM**

*For use on short to medium-length hair to create body or a smooth blowdry.*



**ROUND BRUSH Ø 43 MM**

*To blowdry medium to long hair.*



**ROUND BRUSH Ø 53 MM**

*For use on long and extra-long hair or to create lots of volume in midlength styles.*



**ROUND BRUSH Ø 43 MM XL**

*XL to blowdry large sections of hair. Perfect for medium to long hair.*



**BOAR HAIR BACKCOMB BRUSH**

*Narrow boar hair bristle brush for backcombing and teasing. Provides instant volume and brushes out easily.*



The Spa Brush Collection brushes are specially designed to distribute the natural oils while exfoliating the scalp. The brushes are lightweight and designed with a special rubber finished handle to make it easy to work with. The collection consists of three brushes with a mix of Nylon Ballpoint Bristles and 100% boar hair. The boar bristles distribute the natural oils from the scalp to the ends of the hair, to provide softer and smoother hair. Flexible nylon bristles massage the scalp to improve blood circulation and allow brushing without causing damage or breakage to the hair.



#### **DETANGLING SPA BRUSH**

*Flexible nylon bristles for easy detangling. The soft nylon ballpoint tip bristles massages the scalp to improve blood circulation and allows brushing without causing damage or breakage to the hair.*



#### **LUXURY SPA BRUSH**

*Especially designed for a professional finish. The 100% boar hair bristles allow the hairs natural oils to condition the hair, from root to end. The brush stimulates the scalp, increases blood circulation and cleanses the hair.*



#### **ALL PURPOSE SPA BRUSH**

*The boar bristles distribute the natural oils from the scalp to the ends of the hair, to provide softer and smoother hair. Flexible nylon bristles detangle the hair without pulling.*



#### **ALL PURPOSE SPA BRUSH MINI**

*Special travel size all purpose brush.*



#### **DETANGLING BRUSH**

*The flexibility of the bristles ensure pain-free detangling while the soft tips massage the scalp to stimulate the blood circulation.*

# PROFESSIONAL COMB COLLECTION

## *Hand carved and anti/static*

Hand carved and polished professional comb collection for comfortable cutting and styling. Designed with a black and white two-colour surface to easily work in any hair colour. Made of durable, cellulose acetate with anti-static properties. In contrast to injection molded combs, hand carved combs are polished afterwards to ensure that the teeth are smooth and free from sharp edges and imperfections to prevent damage and spit ends. Suitable for all hairstyles.

All combs (*except the Colour Comb*) are designed with a black and white two-colour surface to easily work in any hair colour.



### TEXTURE COMB

*Perfect to untangle tight curls into natural looking waves. Designed with wide tooth, which makes it suitable to use on wet or dry hair.*



### CONTOUR COMB

*Small, hand carved and polished professional comb for comfortable cutting, with wide and ultra-fine teeth for trimming and contouring. Shaped with straight edges to assist in a clean cut and a special tooth to easily section the hair.*



### CUTTING COMB

*Large, hand carved and polished professional comb for comfortable cutting and styling. Shaped with straight edges to assist in a clean cut and a special tooth to easily section the hair.*



### TAIL COMB

*Hand carved and polished professional comb with fine teeth for more precise styling and finishing. Perfect for sectioning, lifting and backcombing the hair.*



### COLOUR COMB - black colour

*Hand carved and polished professional comb for comfortable colouring and detangling. Designed for easy distribution of hair colour through the hair.*

**BALMAIN**  
PARIS





#### **CORDLESS STRAIGHTENER**

Specially designed for traveling and backstage work, is the perfect tool for quick, effortless straightening and easy curls and waves. The advanced titanium floating plate technology delivers the ultimate styling results with a silky, shiny and healthy finish. Heats up to 200 °C/ 392 F.

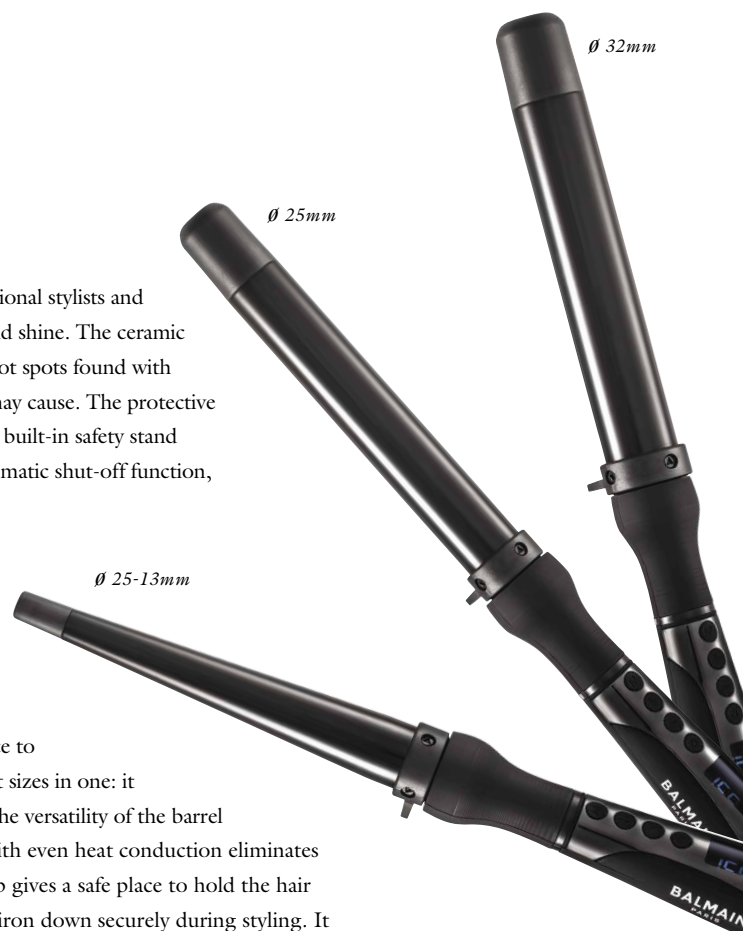
# TOOLS

## PROFESSIONAL CERAMIC CURLING WAND

The Balmain Professional Ceramic Curling Wand is designed for professional stylists and provides the ultimate styling surface that gives the curls more bounce and shine. The ceramic barrel technology with even heat conduction eliminates the damaging hot spots found with other irons. Designed without a clip, which eliminates any kinks a clip may cause. The protective cool tip gives a safe place to hold the hair in place while curling, and the built-in safety stand allows to place the iron down securely during styling. It features an automatic shut-off function, which disables the Curling Iron after 60 minutes of inactivity.

## PROFESSIONAL CERAMIC CONICAL CURLING WAND

The Balmain Professional Ceramic Conical Curling Wand is designed with a 25-13 mm tapered barrel that provides the ultimate styling surface to create natural looking curls. The tapered barrel combines many different sizes in one: it starts with one size at the bottom and tapers off to a rather small size. The versatility of the barrel makes it suitable for all kinds of curls. The ceramic barrel technology with even heat conduction eliminates the damaging hot spots found with other irons. The protective cool tip gives a safe place to hold the hair in place while curling, and the built-in safety stand allows to place the iron down securely during styling. It features an automatic shut-off function, which disables the Curling Wand after 60 minutes of inactivity.



## PROFESSIONAL BLOWDRYER

The Professional Blowdryer is a premium hairdryer, featuring a long lasting 2000W professional motor which gives a powerful airflow for super-fast drying. The hairdryer is ergonomically designed to ensure a comfortable hold and has a rubberized finish allowing for better grip when styling. The built-in ionic generator creates millions of negative ion particles. The ionic technology allows these particles to seal cuticles, infuse moisture, rehydrate, eliminate frizz and provides a silk and smooth end result. Equipped with 3 speed and 4 precise heat settings (*including cool shot function*), the blowdryer helps to prevent heat damage to protect natural shine. Features a 3m professional power cable that allows for flexible styling.

## PROFESSIONAL TITANIUM STRAIGHTENER

The titanium plates give 24% more heat conduction for a more polished and lasting effect. The hair will be smooth and shiny, without being damaged. The straightener delivers exact temperatures to work with both Memory® Hair and 100% Human Hair. Smoothly gliding titanium floating plates for a quick result for a silky, shiny and healthy finish.



# LES ACCESSOIRES

Inspired by the house's rich couture heritage and relying on nothing but the finest materials, craftsmen and design, Balmain Hair Couture created "Les Accessoires", a luxury hair accessory line. The hairpieces in the "Les Accessoires" collection are entirely handcrafted by using traditional techniques. Every single item in this collection features the signature golden detailing. This returning design element can be found in all Balmain Paris collections.

## HAIR CLIPS



Pince à Cheveux Small



Pince à Cheveux Medium



Pince à Cheveux Large



Barrette Pour Cheveux Medium



Barrette Pour Cheveux Large



Elastique Pour Cheveux

A collection of high-quality hair clips. All items are handcrafted from durable cellulose acetate material and designed with the signature 14K gold plated "B".

The extremely strong yet flexible material is hypoallergenic and gentle to the hair and scalp. The patterns created inside each sheet of cellulose acetate, gives the hair accessory a wonderful depth of colour.

*\* Available in the colours black, ivory and tortoise*



## HAIR BARRETTE

An exclusive iconic hair accessory. The handcrafted Hair Barrette is made of the finest high quality genuine leather and fastens with a hand polished, 14K gold plated hairpin with engraved logo. The supple leather is shaped to curve seamlessly around ponytails and buns. A delightful addition that accentuates each hairstyle.







## LEATHER HEADBAND

A luxurious hair accessory designed with the brand's signature golden details. The Leather Headband is crafted from supple Napa and Nubuck leather for extra grip. The high-end hair accessory allows for endless creative possibilities. Perfect to wear as a headband, tie as a bow or use to accentuate a sleek ponytail or messy braid.





Designed with the finest materials and designs, Balmain Hair Couture presents this seasons Limited Edition Hair Accessory collection. Entirely handcrafted by using traditional techniques. Every single item features signature golden details, inspired by the returning design elements of all Balmain Paris collections.

## LIMITED EDITION HAIR ACCESSORIES



### **BARRETTE POUR CHEVEUX JEWELRY GOLD SS21**

The handcrafted Hair Barrette is 18K Gold Plated and fastens with a hand polished, 18K gold plated hairpin with engraved logo with small B jewelry.



### **BARRETTE POUR CHEVEUX B GOLD SS21**

A handcrafted 18K Gold plated hair accessory with the brands signature B emblem. Designed with unique French clip that ensures a strong hold to avoid the clip from slipping out of the hair.



### **SLIDE JEWELRY SS21**

18K Gold Plated hair slide designed with engraved logo and iconic logo jewelry.



### **CELLULOSE ACETATE PINCE À CHEVEUX**

Luxurious handmade hair accessory with 18K gold plated B. The Pince à Cheveux Turquoise is suitable for any occasion and instantly adds a touch of class to every hairstyle. Including Hidden Spring mechanism for more grip.

*Available in Medium and Extra Small*





# HAIR COUTURE EXTENSIONS

## SYSTÈME VOLUME & SILK EXTENSIONS

A selective extension collection made of the highest quality 100% Human Hair, **only** available for selected, high-end salons.

Silk Extensions and Système Volume allow the stylist to fulfil all the client's desires and needs. The collections consist of the same 18 colour tones, or a subset of 12, which makes it easier and more convenient to combine different application techniques.

# COLOUR PALLETS

## IN SYSTÈME VOLUME AND SILK EXTENSIONS

A creation of 18 fabulous colour-tones in a harmonious scheme from lustrous black (nr. 1) to a super light blonde (nr. 10). A combination of beautiful natural shades, fashionable ash tones and warm and lively ombre shades.\*

- 6 Natural level tones, from lustrous black to super light blonde
- 4 Golden blonde tones for a perfect natural warm glow
- 4 Fashionable matt ash tones
- 1 Mahogany shade with a remarkable red-brown character
- 3 Ombre shades, giving the hair a beautiful graded and highlighting effect.



- *These colours are only available if the product is available in 18 colours.*



*Use the Consultation Boutique to match the colour of the extensions with the client's natural hair or mix different colours to play with low- and highlights.*





## SYSTÈME VOLUME APPLICATEUR

The applicator heats up quickly and ensures that the optimal temperature is delivered to place the extensions into the hair. The Silicon Pads, used in the Positionneurs, protect the natural hair against the heat of the Applicateur and can be used multiple times. The 4 positionneurs support the speed of application by allowing to proceed with the application of extensions while giving the previous applied bonds time to cool down.

# SYSTÈME VOLUME

## FOR INSTANT VOLUME & LENGTH

Système Volume is an exclusive, super-fast extension system patented by Balmain Hair Couture for selective salons only. The revolutionary technology places 5 pre bonded 100% Human Hair extensions in just 35 seconds. The high-tech and ergonomic applicator and positioners follows the shape of the head and ensures accurate and comfortable positioning. The oval silk bonds with specially designed flat backside allow for comfortable wearing and a more natural hair distribution.



### VOLUME SERVICES

Système Volume is available per 10 pieces in a transparent polybag which makes it easy to choose the right colour from the stock in the salon. Perfect the demand for small volume services in the salon.

### HAIR TYPES

Two different hairtypes, fine and normal hair, to create a custom made solution based on the individual needs of the client.

#### *For fine hair*

Cheveux Fins

Diameter 0,02 – 0,04 mm

#### *For normal to thick hair*

Cheveux normaux

Diameter 0,05 – 0,07 mm

*Système Volume available in 3 lengths:*

- 25 cm (normal hair)
- 40 cm (fine and normal hair)
- 60 cm (normal hair)



# SILK EXTENSIONS

## INFUSED WITH SILK PROTEIN

An exclusive line of high quality Human Hair Additions. This high quality human hair went through an extremely mild colouring process in decolorizing and 3D pigmenting to keep the hair in the best condition while providing a vibrant, long-lasting colour. The hair is infused with Silk Protein to replenish, moisture, repair and protects the hair. Hair- and silk proteins are almost identical and therefore the perfect natural match. Silk Protein seals cuticles and provides a natural silky shine to the hair.

### FILL-IN SILK BOND

The prebonded Fill-In Silk Bond Extensions are perfect for volume and colour (highlight) treatments. The hair is connected to the natural hair with revolutionary Silk Protein infused Silk Bonds. Due to the natural cohesion between the Silk Bond and the natural hair's structure, Fill-Silk Bond extensions remain in place for up to 3 months. One pack of Fill-in Silk Bond extensions (25pcs) equals a basic volume treatment. For full volume 50 to 100 prebonded extensions are recommended.

### DOUBLEHAIR SILK

DoubleHair Silk is a patented, reusable weft extensions system. The 9 cm wide wefts each contain three layers of hair which allow you to create instant volume and length with a minimum number of applications. To ensure invisible integration and comfortable wearing, the wefts are fastened under a layer of extension hair with either clips, rings or keratin bonds.

**BEST  
SELLER**



### SILK TAPE

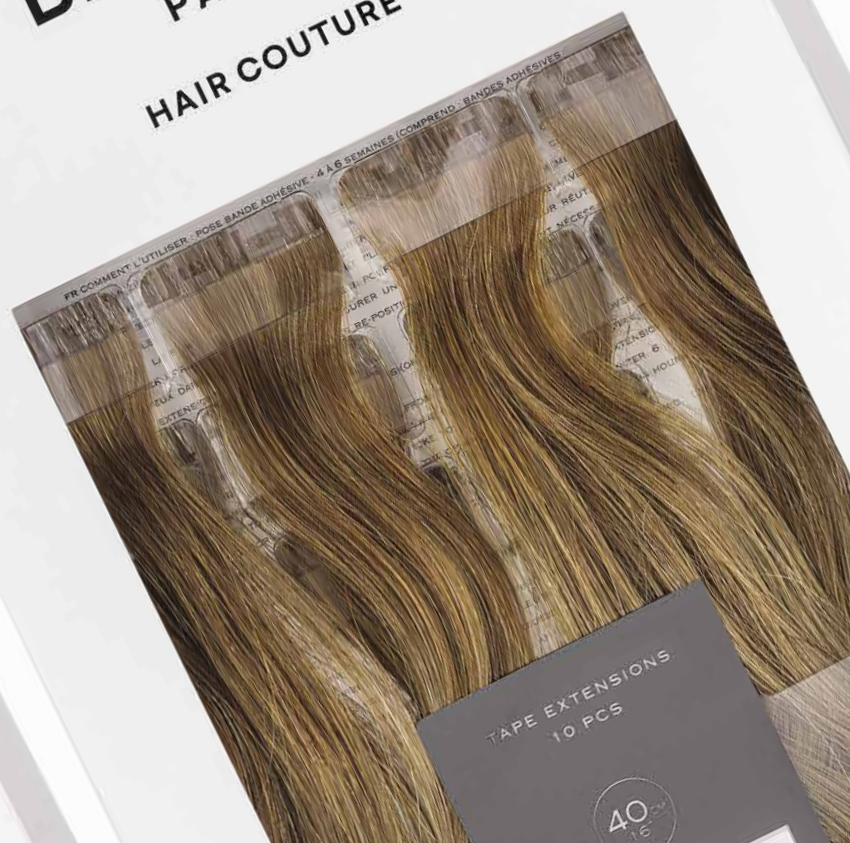
Silk Tape extensions are semi-permanent, reusable tape extensions that are undetectable to the touch. The ultra-flat application ensures perfect hair distribution and comfortable wearing. The 2,8 cm wide tapes are easy to apply and provide an instant result. Perfect for volume and colour (high- or lowlight) treatments.



**BALMAIN**  
PARIS  
HAIR COUTURE

**BALMAIN**  
PARIS  
HAIR COUTURE

**BALMAIN**  
PARIS  
HAIR COUTURE



TAPE EXTENSIONS  
10 PCS

40-60







# READY-TO-WEAR

## CHANGE IN 5 MINUTES

In collaboration with backstage stylists, Balmain Hair Couture developed an exclusive Ready-to-Wear collection of hairpieces and hair additions to create the most gorgeous catwalk inspired looks. Luxurious lengths, fabulous volume or a sophisticated updo in just minutes. Take a look behind the scenes and discover the backstage secrets of the fashion shows.



- These colours are only available if the product is available in 18 colours.



## CLIP-IN WEFT SET

### VERSATILE VOLUME & LENGTH

The Clip-In Weft Set, made of 100% Memory®Hair or 100% Human Hair, with patented Soft Blend Edge invisibly adds full volume and length. The 5 different width strips allow for a more customized look.

- Available in 100% Human Hair 40cm and Memory®Hair 45cm
- Easy and reliable Clip-In application
- 5 different width strips (2 x 7,5 cm, 1 x 13 cm, 1 x 20 cm, 1 x 25 cm)
- Soft Blend Edge integrates perfectly into natural hair



# CATWALK PONYTAIL

## SIGNATURE BALMAIN PONYTAIL

The Catwalk Ponytail, developed by backstage stylists, can be considered as the ultimate backstage secret. These amazing ultra long ponytails have been spotted on the fashion catwalk numerous of times! The must have hairpiece, made of 100% Memory®Hair, for a quick, easy and fashionable hairdo in less than 5 minutes.

- Memory®Hair 55cm
- Easy application
- Easy to straighten and curl (max. 160°C/320°F)
- Remembers last applied styling technique



# HAIR DRESS

## EASY STRAND APPLICATION

The Hair Dress is easy to apply without damaging the natural hair. The transparent strand rests on the head, not on the hair and holds the hairpiece perfectly in place without the risk of slipping out. The Hair Dress contains a patented Soft Blend Edge for perfect integration.

- Available in 100% Human Hair 40 & 55 cm and Memory®Hair 45 cm
- Easy and reliable Fill-In Strand application
- Soft Blend Edge integrates perfectly into natural hair
- Not damaging for your hair
- No risk of slipping out



## VOLUME SUPÉRIEUR/ VOLUME SECRET FILLER

### SUPERIOR VOLUME ON TOP

This hairpiece, made of 100% Memory®Hair or 100% Human Hair, creates instant volume on top without the need for backcombing. The V-shaped hairpiece attaches around the parting under a layer of natural hair and is therefore invisible once clipped in. The volume booster blends perfect with the natural hair and is ideal for fine, pit less hair with a lack of volume on top.

- Available in 100% Human Hair and Memory®Hair
- Easy and reliable Clip-In application
- Invisible integration











## CLIP-IN BUN

### SOPHISTICATED UPDO'S

The Clip-In Bun, made of 100% Memory®Hair, creates a sophisticated updo in just seconds. The hairpiece with easy clip application is placed over the natural hair and can be curled or straightened (*max. 160°C / 320°F*) to create the desired look.

- Made of 100% Memory®Hair
- Easy application
- Easy to straighten or curl (*max. 160°C / 320°F*)

## CLIP-IN FRINGE

### FRINGE WITHOUT MAKING THE CUT

This hairpiece, made 100% Human Hair offers a non-permanent solution to get all the fringe benefits without making the cut. The Clip-In Fringe allows you to experiment with bangs without the high-maintenance hassle of growing them back out. Works on almost any face and is easy to apply due to the clip-in application.

- Available in 100% Human Hair
- Easy and reliable Clip-In application
- Invisible integration





# POINT-OF-SALE MATERIALS

Balmain Hair Couture acknowledges the importance of presentation. Differentiating by appearance is key nowadays. With this in mind Balmain Hair Couture developed beautiful support materials to present the Hair Couture collection. Eye-catching and appealing displays and banners, which will compliment every salon.



